



cronetwork portal



The workplace of the future

The right information
at the right time in the right place.
Customized. Fast. Easy.

Portal

Intelligent features & pioneering usability

As a leading vendor of Manufacturing Execution Systems (MES), we are specialized in bringing transparency to highly complex production tasks. With the new cronetwork portal we have set a milestone that revolutionizes the user interface and processes

„With cronetwork portal, production enterprises can handle the balancing act between the enormous amounts of occurring data and the customized data processing needed for decision support.“

Eckhard Winter, CEO of Industrie Informatik

information precisely and flexibly. This is an important step toward Industry 4.0. Modern production faces huge challenges: it must be equally flexible, efficient and sustainable. This requires well-trained production personnel who can optimally utilize their competencies with the respective machinery. The guiding principles for cronetwork portal are flexibility, networking, transparency, usability and autonomy. This significantly supports networked thinking and autonomous action on the part of staff.

EASILY CONFIGURED DIRECTLY BY THE USER

With cronetwork portal, the user has a powerful and intelligent tool with well-designed features: In a modular system, portals can be assembled from a wide range of modules called portlets. Via drag-and-drop, the user can combine lists, tachographs, drawings, images, work center monitors, diagrams, target/actual behavior, etc. in flexible portal views. Results of operative business intelligence get to staff in an uncomplicated and fast way. Any number of portals can be created in a structured way, individually named and grouped, e.g., by hall, by roles or even by specific situations. Per portlet you can define up-

date intervals; the information contained is then displayed as up-to-date as you need it. Additional application options result from communication between the portlets.

CRONETWORK PORTAL :: EXAMPLES FROM PRACTICE

A portal can combine, e.g., a work center monitor, a tachograph, an order list and production indexes. Click on a machine and the portal shows you recent performance of this machine along with its current KPIs. At a glance you can see whether the machine is operating in the green.

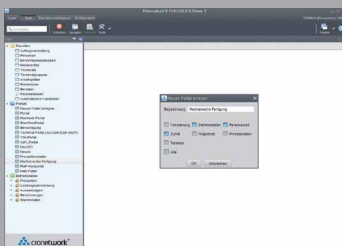
Other possible portal applications include:

- :: monitoring and control of a change of product
- :: processing and display of employee master data and transaction data
- :: startup of a new machine

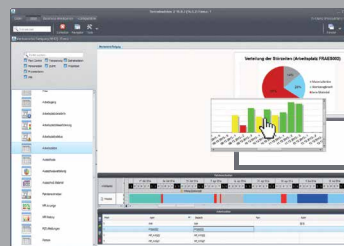
Not only does the portal display the right data at the right time in the right place; the data are also processed specifically for the respective user and focused to his current requirements.



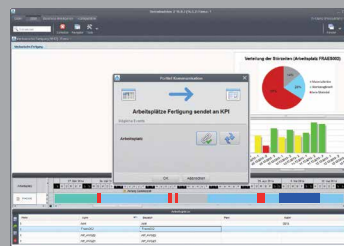
Portals can be configured to each user's requirements, so that ideally every employee can easily optimize his own working environment himself. Likewise portals can be created and released for specific user groups, e.g., by the production manager for the respective foremen. Restrictions and limitations are automatically handled by combining the portal with the cronetwork authorization concept to control who can use which portlets and what content can be displayed.



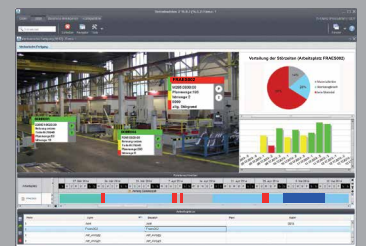
Any number of portals can be created in a structured way, individually named and grouped.



Various portlets can be selected and assembled in a modular way.



Portlets can be networked and can exchange information.



Required information is available to users as needed and in real time.

FLEXIBLE CONFIGURATION

A single user interface lets you combine a range of portlets via drag-and-drop: create, test, adapt and delete them as needed. Portlets can send and receive data: links are created or deleted simply by mouse click.

CUSTOMIZED APPLICATION

A portal can be configured to tasks, users or processes. Portals can even be configured for temporary tasks. Finished portals can be made available to other users. The integrated authorization system controls what content a user can access.

DIRECT PROCESSING OF DATA

Not only does a portal enable you to assemble all relevant information for a certain task; you can also jump directly to the operative user interface – a click takes you from the portal to the respective detail mask where you can directly access the data.



Who benefits from the portal?

- ∴ production managers
- ∴ production planners
- ∴ quality assurance staff
- ∴ lean production managers
- ∴ foremen in production

CEOs and site managers use the portal primarily to display business intelligence information.



The development of cronetwork portal has incorporated the practical knowledge of our customers as well as our broad application- and process-specific know-how. You benefit from our more than 20 years of experience in the optimization of production processes.

Scheduling Board

Graphic scheduling for your production: live, fast and flexible

Plant Data

Low feedback effort for a real-time view & traceability

Machine Data

Correct data & information automatically

Time & Attendance

Clear employee administration and flexible scheduling

Business Intelligence

Analyses & evaluations with real-time information

Mobile Applications

Enter and evaluate data from any location

Technology

Benefits for software owners and users

cronetwork MES: The data hub for the Smart Factory



Industrie Informatik GmbH & Co. KG, Germany
79359 Riegel am Kaiserstuhl :: Großherzog-Leopold-Platz 1/1
tel.: +49 7642 92409-0 :: fax: +49 7642 92409-29 :: e-mail: info@industrieminformatik.com

Industrie Informatik GmbH, Austria
4020 Linz :: Wankmüllerhofstraße 58
tel.: +43 732 6978-0 :: fax: +43 732 6978-12 :: e-mail: info@industrieminformatik.com

Industrie Informatik (Shanghai) Co., Ltd., PR China
201203 Shanghai, Pudong, 88 Keyuan Road, German Centre of Industry and Trade,
Unit 701-010, Block 1, China (Shanghai) Pilot Free Trade Zone
tel.: +86 21 2898 6790 :: fax: +86 21 2898 6010 :: e-mail: info@industrieminformatik.com

英社睿信息技术(上海)有限公司
中国(上海)自由贸易试验区, 科苑路88号1分区701-010单元, 德国中心, 浦东
电话: +86 21 2898 6790 :: 传真: +86 21 2898 6010 :: e-mail: info@industrieminformatik.com